

COMPANY BROCHURE



PETROFIT
ALLOYS AND ENGINEERING LLP
AN ISO 9001:2015 CERTIFIED COMPANY

STRENGTHENING INNOVATION, FORGING THE FUTURE



ABOUT US



At Petrofit Alloys and Engineering LLP, We excel in manufacturing, exporting, and supplying ferrous and non-ferrous metals, including pipes, fittings, flanges, and fasteners. We prioritize understanding our clients' needs and delivering **exceptional service**.

Serving industries such as Oil and Gas, Power Plants, Petrochemicals, and more, We handle projects of all sizes with superior quality, timely delivery, and competitive prices. Our experienced team ensures compliance with rigorous standards and third-party inspections.

We look forward to being your **trusted supplier** and receiving your inquiries, promising prompt and careful attention.



COST
EFFECTIVE



OPTIMUM
QUALITY



TIMELY
DELIVERY



READY
STOCK

info@yourdomain.com

www.yourwebsite.com



QUALITY CONTROL

STEP 1

RAW MATERIAL INSPECTION

Thorough examination of incoming raw materials to detect defects and ensure adherence to specified standards.

STEP 2

RAW MATERIAL TESTING

Chemical and mechanical assessments to verify material properties, including composition, purity, strength, and durability.

STEP 3

MANUFACTURING PROCESS

Following standard procedures and quality control protocols to minimize variations and ensure uniformity in the final product.

STEP 4

VISUAL & DIMENSIONAL CHECK

Inspection of finished products for visual defects and dimensional accuracy to meet customer expectations.

STEP 5

TESTING OF FINAL PRODUCT

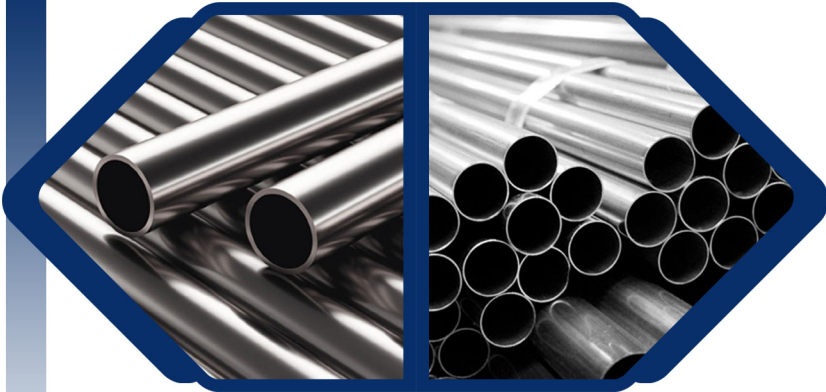
Rigorous evaluation to validate integrity and reliability, safeguarding against potential issues in real-world applications.

STEP 6

PACKAGING

Tailored to client needs using suitable materials for safe delivery and enhanced customer satisfaction.

PRODUCT LIST



PIPES & TUBES

PIPES (SEAMLESS & WELDED)

RANGE – 6NB TO 1200NB - SCH. 5, 10, 20, 30, 40, 60, 80, 100, 120, 140, 160, XXS.

TYPE – SROUND, SQUARE, RECTANGLE, HYDRAULIC, HORN TUBES.

TUBES (SEAMLESS & WELDED)

RANGE – ¼" OD - 12" OD. GAUGE : 25 SWG. - 10 SWG

TYPE – ROUND, SQUARE, RECTANGLE, COIL, "U" SHAPE, HYDRAULIC & HORN TUBES

MATERIALS OF CONSTRUCTION

STAINLESS STEEL – ASTM A312, A358, 201, 202, 204C4, 15-5PH TP304, 304L, 304H, 316, 316L, 316H, 316TI, 309, 310, 317L, 321, 347, 904L

MILD STEEL – MS. IS 2062

CARBON STEEL – ASTM A106 GR.B, ASTM A53, API 5L

TITANIUM – ASTM B338 GRADE - 1, 2, 3, 5 (6AL-4V), 7, 9, 11, 12, 23 (6AL-4V ELI).

HIGH NICKEL ALLOYS – HASTELLOY, NICKEL, MONEL, INCONEL, INCOLOY, ALLOY-20 & CUPRO NICKEL

DUPLEX – ASTM A790 / UNS S31803 & S32205 (2205).

SUPER DUPLEX – ASTM A790 / UNS S32750 (2507) & S32760

ALLOY STEEL – ASTM A335 GR. P5, P9, P11, P12, P22, P91

ALUMINUM – 1050, 1100, 2014, 2017, 5052, 5083, 5086, 6061, 6082, 6063, 7050, 7075,
TEMPER (T6, T4)

BRASS – C26800, C27400, 36000, 37700, C38500

NON FERROUS – COPPER, BRASS, COPPER ALLOYS

TEST CERTIFICATES – MTC, IBR & THIRD PARTY INSPECTION

ERW / EFW PIPES – 100% RADIOGRAPHED

BARS

MATERIAL – STAINLESS STEEL, CARBON STEEL, ALLOY STEEL, BRASS, BRONZE, COPPER, NICKEL, DUPLEX, SUPERDUPLEX, INCONEL, MONEL, HASTEALLOY

SHAPES – ROUND, SQUARE, RECTANGLE, HEX, FLAT, STRIP, THREADED ROUND BARS

STANDARDS – ASTM/ ASME SA276, IS 2062, ASTM A36

GRADES –

STAINLESS STEEL – SS304, S5316, SS310, SS321,SS409, SS410, SS304 L, 55304H, SS316, SS316L, SS316H, SS310, SS409, SS409H, SS317, SS317H, SS347, SS904L, SS202

MILD STEEL – MS, IS 2062

CARBON STEEL – EN SERIES

DUPLEX – UNS S31803, UNS 532205, SS329

SUPER DUPLEX – UNS S32750 / S32760

INCONEL – INC 600, 601, 625, 825, 925, 718

MONEL – MONEL 400/ MONEL K500

HASTEALLOY – HASTEALLOY C276, C22, C4, C2000, B2

ALLOY20 / NICKEL200 / NICKEL201

SIZE – 5MM TO 350MM DIA, 500MM TO 6500MM LENGTH

FINISH – BLACK & BRIGHT

SHEETS, PLATES & COILS

MATERIAL – STAINLESS STEEL, CARBON STEEL, DUPLEX, SUPER DUPLEX, COPPER, BRASS, NICKEL, ALUMINIUM, CORTEN STEEL, HIGHT NICKEL ALLOY PLATES

TYPES – PROFILE CUT, CHEQUERED, DECORATIVE, PERFORATED, COILS, CIRCLE, RINGS, EXPANDED SHEET, CORRUGATED

STANDARDS – ASTM/ ASME SA/ A240, SA/ A516, IS 2062

GRADES –

STAINLESS STEEL – SS304, SS304L, SS304H, SS316, SS316L, SS316H, SS310, SS310H, SS321, SS3121H, SS409, SS410, SS202

MILD STEEL – A36, IS 2062 E250, IS 2062 E250BR

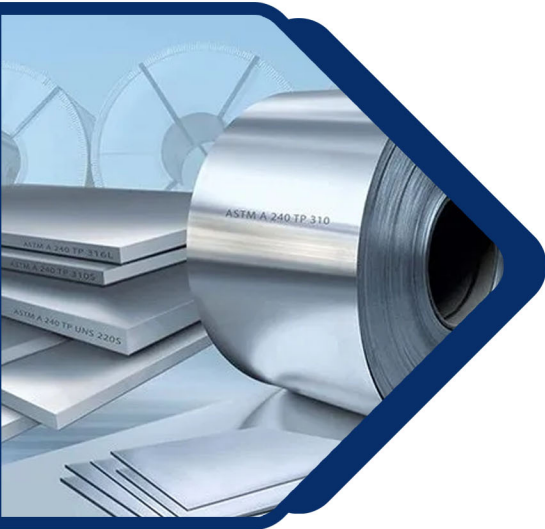
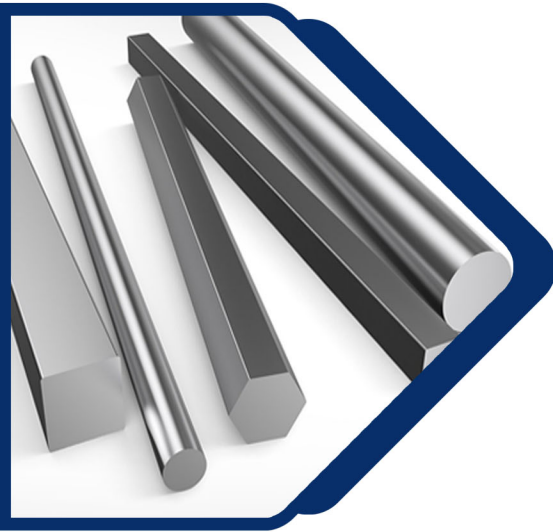
CARBON STEEL – A516 GR 60/60N, A516 GR 70/70N

SIZE – 0.5MM TO 100MM THK

1000 TO 3000MM WIDTH

2000 TO 12000MM LENGTH

FINISH – HOT ROLLED, COLD ROLLED, PVC COATED, MILL FINISH, ELECTRO-PLATED, NO. 1 & 4 FINISH, 2B, BA



BUTT-WELD FITTINGS

1) ELBOW



90° LR



90° SR



45° LR



180° LR

2) TEE



EQUAL TEE



REDUCING TEE



CROSS TEE



REDUCING CROSS TEE

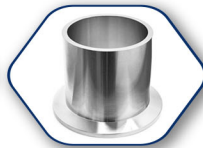
3) REDUCER



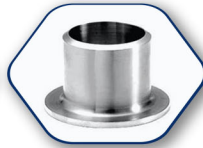
CONCENTRIC



ECCENTRIC



LONG STUB END



SHORT STUB END

4) STUB END

5) PIPE NIPPLE



6) END CAP



MATERIAL – STAINLESS STEEL, DUPLEX, SUPER DUPLEX, CARBON STEEL & ALLOY STEEL

PROCESS – SEAMLESS, WELDED (ERW/ EFW)

STANDARDS – ASTM/ ASME SA/ A403, SA/ A234

GRADES –

STAINLESS STEEL – SS304, SS316, SS310, SS321, SS409, SS410, SS304 L, SS304H, SS316, SS316L, SS316H, SS310, SS409, SS409H, SS317, SS317H, SS347, SS904L, SS202

MILD STEEL – MS, IS 2062

CARBON STEEL – EN SERIES

DUPLEX – UNS S31803, UNS 532205, SS329

SUPER DUPLEX – UNS S32750 / S32760

INCONEL – INC 600, 601, 625, 825, 925, 718

MONEL – MONEL 400/ MONEL K500

HASTEALLOY – HASTEALLOY C276, C22, C4, C2000, B2

ALLOY20 / NICKEL200 / NICKEL201

CARBON STEEL – A234 WPB / A420 WPL 6

DIMENSION STANDARDS – ASME B16.9, MSS-SP-43

SIZE – 1/2" NB TO 48" NB SCH 5, 10, 40, 80, 100, 120, 160, XXX

END PREPARATION – BEVEL ENDS, THREADED ENDS

FINISH – PICKLED, GALVANIZED OR BLACK, SANDBLASTED, ELECTRO-POLISH

SCREWED & FORGED FITTINGS



90° ELBOW



45° ELBOW



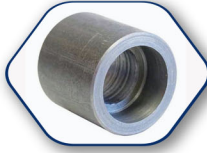
CROSS TEE



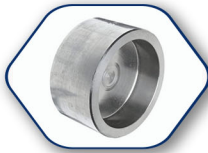
TEE



COUPLING



HALF COUPLING



END CAP



HEX NIPPLE



SWAGE NIPPLE



REDUCER INSERTS



BOSS



STREET ELBOW



PLUG



BUSHING



UNION



O'LETS

MATERIAL – STAINLESS STEEL, DUPLEX, SUPER DUPLEX, CARBON STEEL & ALLOY STEEL

STANDARDS – ASTM/ ASME SA/ A182, SA/ A105

GRADES –

STAINLESS STEEL – SS304, SS316, SS310, SS321, SS409, SS410, SS304 L, SS304H, SS316, SS316L, SS316H, SS310, SS409, SS409H, SS317, SS317H, SS347, SS904L, SS202

MILD STEEL – MS, IS 2062

CARBON STEEL – EN SERIES

DUPLEX – UNS S31803, UNS S32205, SS329

SUPER DUPLEX – UNS S32750 / S32760

INCONEL – INC 600, 601, 625, 825, 925, 718

MONEL – MONEL 400/ MONEL K500

HASTEALLOY – HASTEALLOY C276, C22, C4, C2000, B2

ALLOY20 / NICKEL200 / NICKEL201

CARBON STEEL – ASTM A / SA 105

DIMENSION STANDARDS – ASME B16.11, MSS-SP-79/ 83/ 95/ 97

SIZE – 1/8" TO 4" CLASS 2000/ 3000/ 6000/ 9000

END PREPARATION – SOCKET-WELD ENDS, THREADED ENDS, BUTT-WELD ENDS

FINISH – PICKLED, GALVANISED, ELECTRO-POLISH

FLANGES



SLIP ON



WELD NECK



SOCKET WELD



THREADED



BLIND



LAP JOINT



SPECTACLE BLIND

MATERIAL – STAINLESS STEEL, DUPLEX, SUPER DUPLEX, CARBON STEEL & ALLOY STEEL

STANDARDS – ASTM/ ASME SA/ A182, SA/ A105

DIMENSION STANDARDS – ASME B16.5, ASME B16.47 SERIES A & B, DIN, ISO, BS-10 TABLE D, E, F, H

SIZE – 1/2" TO 60" NB

PRESSURE RATINGS - 150, 300, 900, 1500, 2500 LB, PN 6, PN 10, PN 16, PN 25, PN 40, PN 100

FACE – FLAT FACE (FF), RAISED FACE (RF)

USP - CUSTOM MADE FLANGES AS PER DRAWING



FASTENERS

MATERIAL – STAINLESS STEEL, CARBON STEEL, ALLOY STEEL, ALUMINIUM

STANDARDS – AISI, ASTM/ ASME A193/ A194/ A320, IS 1367

TYPES – HEX BOLTS, STUD BOLTS, U BOLTS, ANCHOR BOLTS, NUTS, LOCK NUTS, DOME NUTS, SCREWS, WASHERS, RIVETS

SIZE – 1/8" TO 4", M3 TO M30, 20MM TO 1000MM LONG

THREAD TYPES – UNC, UNF, UNJ, METRIC, FINE THREAD

FINISH – BLACK, HOT DIP GALVANIZED, PICKLED, ELECTRO, ZINC, CHROME, CADMIUM, COPPER & NICKEL PLATING